

## Household Garbage Disposal Instructions

Garbage should be taken out to your local collection site by 8:30 a.m. on designated days.

Area A	Shimoshizu-shinden, Araoi, Satsukigaoka, Daisakuoka, Azetadai, Fujimigaoka, Nakashizu, Midorigaoka(except Dainichi 285fukin), Sakuragaoka, Sakuragaoka-chuo, Imajuku, Kayahashidai, Roppogaoka, Kayahashi, Hanazono
Area B	Handai, Yotsukaido 1-chome, 2-chome(15-ban no ichibu~27-ban) & 3-chome, Yotsukaido 3-ku, Yotsukaido 4-ku, Kitazono, Kenei Yotsukaido Danchi, Kasuga Danchi, Shikawatashi 1-ku, Tsukushiza, Sumiredai, Kuriyamadai, Kuriyama-shinmachi, Midorigaoka Danchi, Sachigaoka, Midorigaoka no Ichibu(285fukin), Sankutasu Yotsukaido, Yotsukaido-chuo
Area C	Kamezaki, Monoi-chayanosaku, Monoi, Monoi 2-ku, Uchikuroda, Nagaoka, Chiyoda, Kuriyamago, Maarai, Dendenkuriyama, Kawado, Shuku, Mukai, Nariyama, Nakadai, Nakano, Yoshioka, Onagi, Nabasama, Ueno, Wada-daiichi, Wada, Uchikuroda-tetsudo Danchi, Ikehana, Kenei Kuriyama Danchi, Takanodai, Meiwa 1-chome, 2-chome & 5-chome, Monenosato, Yoshiokaminami
Area D	Yotsukaido 2-chome (1~15ban no ichibu), Shikawatashi 2-ku, Warabi, Sansai, Warabinishi, Misora, Asahigaoka, Konandai, Warabigaoka, Asahigaoka Daini Green Town, Shikawatashi, Utsukushigaoka, Meiwa 3-chome & 4-chome



可燃ごみ Burnable Garbage	A B地区	月	水	金
	Area A B	Monday	Wednesday	Friday
	C D地区	火	木	土
	Area C D	Tuesday	Thursday	Saturday

収集日が祝休日のときは、収集しません。

No garbage pick-up on holidays.

- ◆Kitchen trash (Including food scraps, peelings, egg shells, used cooking oil)
- ◆Paper (Including disposable diapers, 500-ml or smaller juice and milk cartons)
- ◆Wood scraps (Including bamboo, small branches up to 50-cm)
- ◆Leather and rubber (Including shoes, bags, belts)
- ◆Non-recyclable cloth (Including underwear, socks, neckties, washcloth, oil rags, stuffed animals)

Special Instructions

Please buy the garbage bag which Yotsukaido City appointed.

Bundle small branches with twine.

To dispose of used cooking oil buy commercial oil disposal kits (powder which is mixed into oil which solidifies it) OR soak up the oil with newspaper.



プラスチック・ビニール類  
Plastic and Vinyl Garbage

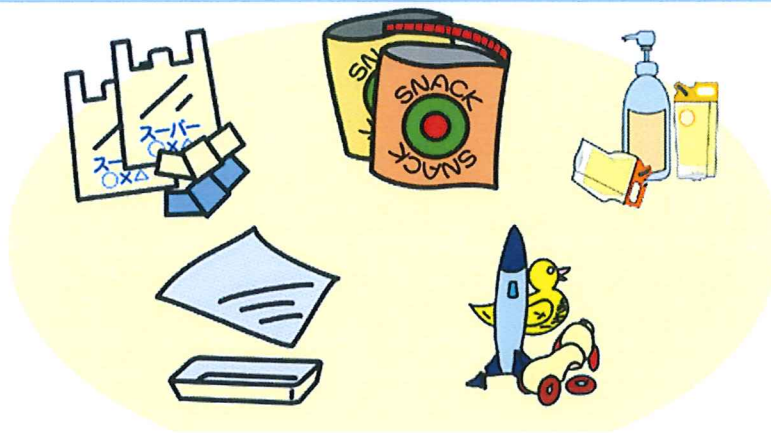
Area A 火 Tuesday  
Area B 木 Thursday  
Area C 水 Wednesday  
Area D 金 Friday

収集日が祝休日も収集します。

Garbage pick-up on holidays.

◆Plastic and vinyl (Including grocery bags, detergent bottles, plastic wrap, small planters, plastic buckets (up to 10-liter), vinyl toys)

◆Styrofoam (Including meat trays, fruit wrapping, colored trays)



Special Instructions

Use transparent or translucent supermarket bags.

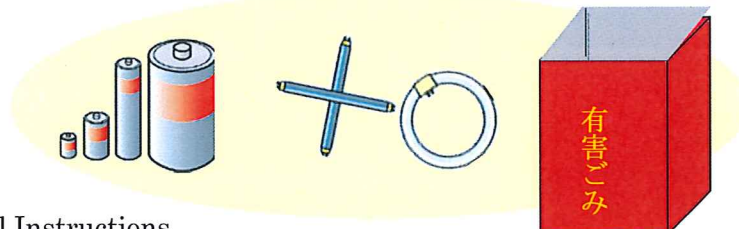
Don't forget to drain water well before disposal.

有害ごみ

Hazardous garbage

◆Batteries (Including dry-cell, mercury)

◆Fluorescent lightbulbs and thermometers (Including mercury-vapor lamps)



Special Instructions

Dispose of at designated locations. (Not at regular garbage pick-up points; check with your neighborhood association.)

不燃ごみ

Non-burnable Garbage

- Area A 第1土 The first Saturday of the month  
Area B 第2土 The second Saturday of the month  
Area C 第3月 The third Monday of the month  
Area D 第4月 The fourth Monday of the month

収集日が祝休日も収集します。

Garbage pick-up on holidays.

- ◆Dishware and pottery (Including dishes, drinking glasses, flowerpots, vases)
- ◆Special glass (Including mirrors, lenses, cosmetic bottles)
- ◆Small appliances (Including irons, hot water pots, Thermos bottles, ventilation fans (up to 30-cm), rice cookers, portable stereos (up to 30-cm), pots)
- ◆Miscellaneous Items (Including metal toys, umbrellas (with cloth removed), small household-use gas canisters, paints cans, hard plastic, aluminum foil, medicine bottles, light bulbs)

Special Instructions:

Do not put larger items in bags.

Make sure gas and spray cans are emptied before disposal.

Use transparent bags for smaller items.

Items larger than 30-cm. are considered “bulky” garbage — see below.



粗大ごみ (有料)

**Bulky (Oversized) Garbage (fee required)**

(Except TV, air-conditioner, refrigerator, washers, drying machine)

- ◆ Home Appliances (Including vacuum cleaners, microwave ovens, electric fans, stereo, gas stoves)
- ◆ Furniture (Including cabinets, desks, tables, sideboards, cupboards, sofas, carpets, futon, blankets)
- ◆ Others (Including bicycles, motorcycles(50cc or less), organs, ski equipment, sewing machines)

Special Instructions

Make sure that all liquids including gas and oil are drained from appliances before disposal.

There are two options for disposal of bulky garbage.

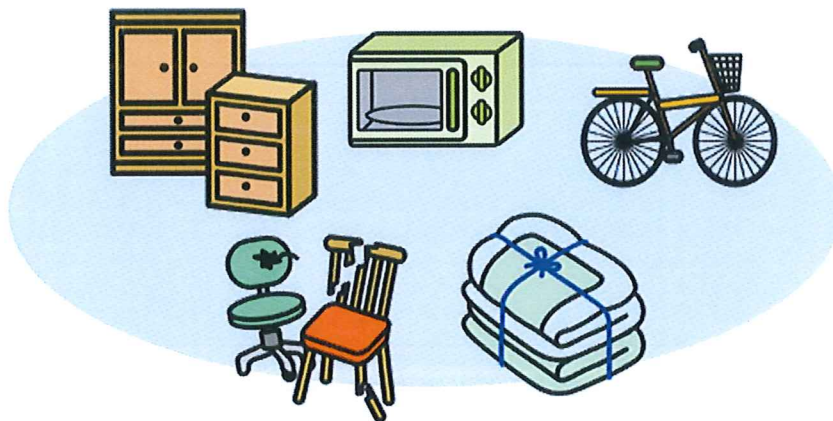
Take items to The Clean Center yourself. The fee is 200 yen per 10 kg.

**OR**

Call for pick up. The fee is according to the items.

If you live in an apartment take the items to the first floor and meet the collector.

For more information call The Clean Center at 043-432-8527



テレビ、エアコン、冷蔵庫・冷凍庫、洗濯機・乾燥機

TV, air-conditioner, refrigerator, washers, drying machine

When you dispose of TV, air-conditioner, refrigerator, washers or drying machine, there are three ways.

1. If you bought a new TV, air-conditioner, refrigerator, washer or drying machine from a retail store, please ask them to receive the old one.
2. Attach "The Control Documentation" and carry it in to the designated place or The Clean Center. Please see below.
3. Attach "The Control Documentation", and please ask a permitted dealer to receive it. Please see below.

\*" The Control Documentation" is issued after you pay the recycling fee through a money transfer at a post office. In addition, a predetermined transfer fee will be applied.

\* When you carry it into The Clean Center, you have to pay transportation.

The recycling fee may vary according to maker and size.

For more information:

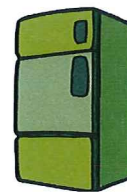
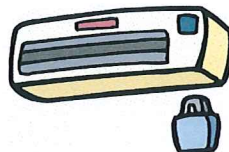
RKC (財団法人 家電リサイクルセンター) ☎ 0120-319640

<http://www.rkc.aeha.or.jp/index.html>

The Clean Center ☎ 043-432-8527

Designated Locations

PHOENIX METAL CORP.	千葉県稲毛区六方町 2 1 0 ☎ 043-423-1148
NIPPON EXPRESS East Chiba Branch	佐倉市大作 1 丁目 8 番地 7 ☎ 043-498-0856



## 小型家電回収

### Collection of Small Electrical Appliances

We collect items such as mobile phones, digital cameras, electric razors, digital thermometers, calculators, electric toothbrushes, hair dryer and so on.

Items 15cm×30cm or smaller.



#### ◆How to discard these items.

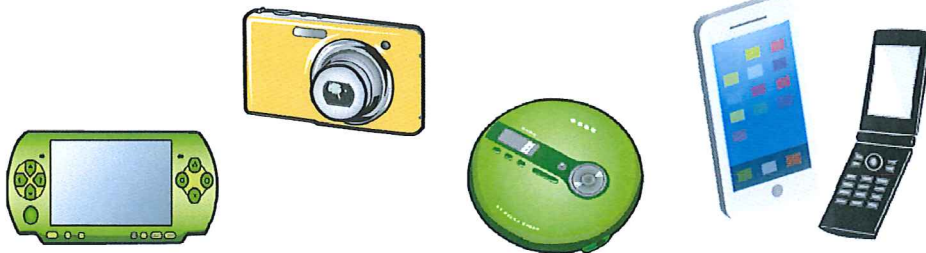
1. Put items into a special collection box placed at 9 locations around Yotsukaido.  
(See below)
2. Items may also be disposed of in the usual way as non-burnable garbage.
3. For other items, please refer to the City's website or call 043-421-6132.

#### ◆Special Instructions

1. Erase all personal data before discarding.
2. Once you have put items into a collection box they cannot be retrieved.
3. Do not discard any CDs, MDs or other media.
4. Remove any batteries. They can be discarded as "hazardous garbage."

#### ◆Collection Boxes can be found at:

City Hall, City Hall Annex, Yotsukaido Community Center, Chiyoda Community Center, Asahi Community Center, Yotsukaido City Library, Yotsukaido Welfare Center, Yotsukaido Cultural Center, Waroubeno-sato.



資源物

Recyclable Garbage

Area A 木 Thursday

Area B 火 Tuesday

Area C 金 Friday

Area D 水 Wednesday

収集日が祝休日も収集します。

Garbage pick-up on holidays.

◆びん類 (Recyclable Garbage (Bottles))

Any empty bottles which contained food or drink including juice bottles, beer bottles, alcohol bottles, spice jars, jam jars, vinegar bottles

Special Instructions

Clean, empty bottles should be separated by color and placed in appropriate baskets.

White basket: clear glass

Brown basket: brown glass

Blue basket: the other glass

Caps and covers should be removed and thrown away with appropriate garbage (metal caps with cans and plastic covers with plastic and vinyl)

Do not put bottles into bags.



◆資源物 (缶類) Recyclable Garbage (cans)

Any empty cans that contained food or drink including beer, juice, soda cans, cookie tins, salad oil cans, tea tins

Special Instructions

Clean, empty cans should be placed in the yellow basket provided.

Do not put cans into bags.



◆資源物 (古紙・繊維) Recyclable Garbage (Paper & Textiles)

• Paper (Including newspapers, ads, magazines, books, catalogues, confectionary boxes, clothing boxes, wrapping paper, cardboard, milk and juice cartons)

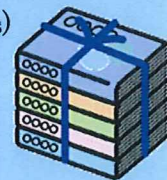
• Textiles (Including old clothes, underwear, sweaters, shoes, towels)

Special Instructions

Bundle books, magazines and paper types separately with twine.

Milk and juice cartons should be rinsed, dried and cut so they lie flat, then bundled with twine.

Textiles should be bundled and tied with twine.





◆資源物 (廃食油) Recyclable Garbage (Used kitchen oil)

- Oil collected: Oils used for cooking at home or vegetable oils past the use-by date.
- Note: Animal fats (butter, lard, etc.) and machinery or engine oils, are not collected.
- How to discard
  1. After it has cooled, remove food particles such as tempura crumbs, and pour it into a plastic bottle or its original container.
  2. Fasten the cap tightly so that no leakage occurs.
  3. Put it upright in the blue recycling basket.



※クリーンセンターでは処理できないごみ

The Clean Center cannot dispose of the following:

Propane gas, gas canisters, oil, kerosene, oil drums, tires (except car tires which are 19 inches or less), car components, chemicals (Including poisons and drugs), ash, sand, gravel, concrete items, paint, pianos, bathtubs, construction and industrial waste, car batteries.

